

(INSTRUCTION: INVIGILATOR TO PLEASE FOLD AT PERFORATION AND THEN TEAR AFTER EXAMINATION IS OVER) (निर्देश: निरीक्षक कृपया परीक्षा होने के पश्चात कटलाईन से मोड़े उसके बाद फाड़े)

ANSWER SHEET NO.

Empty box for answer sheet number.

OMR ANSWER SHEET

PAPER - II

USE BLUE / BLACK BALL POINT PEN ONLY



ROLL NUMBER

Roll number entry grid with columns for digits 1-0.

QUESTION BOOKLET CODE

Question booklet code entry area with options M, N, O, P.

QUESTION BOOKLET NO.

Question booklet number entry grid with columns for digits 1-0.

ANSWERS

Table with 3 columns of question numbers (1-150) and 3 columns of answer options (A, B, C, D).

Signature and name entry area with sections for 'NAME OF THE EXAMINATION VENUE', 'SIGNATURE OF THE CANDIDATE', and 'SIGNATURE OF THE INVIGILATOR'.

SEE REVERSE SIDE FOR INSTRUCTIONS

INSTRUCTIONS FOR FILLING UP THE ENTRIES IN OMR SHEET

1. Write your name, Roll Number, and Examination center in the boxes/space provided
2. Enter your Roll Number by Blue / Black Ball Point Pen bubbling the appropriate circles. For example if your Roll No. is 21/100/25201, the bubbling will be done as shown in Fig.1.
3. Put your signature in the appropriate provided space.
4. Make sure that the invigilator has signed in the space provided.
5. To enter your answer, bubble a circle (option what you feel most appropriate) against the question number in each section.
6. The correct procedure for bubbling is shown in Fig.2. Use only BLUE / BLACK BALL POINT PEN for bubbling.
7. As the answer once marked using Blue or Black Ball Point Pen, can't be changed, candidates are advised to be careful, before marking the answers.
8. All questions carry equal marks. ¼th mark of the each question will be deducted for each wrong answer.
9. Do not write or leave any irrelevant mark on the OMR Sheet. This will lead to disqualification.
10. Please hand over the OMR answer sheet (Original) to the Invigilator before leaving the Examination Hall. You may take the carbon copy of the answer sheet with you.
11. Please note that you have to hand over the Original Answer sheet to the Invigilator before leaving the examination hall and if the carbon copy of answer sheet is handed over in stead of original one, your answer sheet shall not be evaluated.

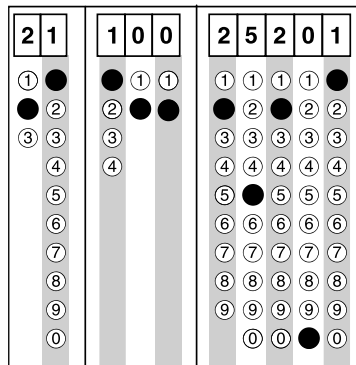


Fig. 1: Sample filling of a Roll Number

USE BLUE/BLACK BALL POINT PEN ONLY.

How to mark answers:

CORRECT METHOD



WRONG METHOD



Fig. 2: Correct bubbling procedure